



Eyebeam Configuration Guide

Version 1.0

Yeastar Information Technology Co. Ltd.

Ensure that you have created the extension that you wish to use with the phone in MyPBX first. Take note of the Extension field and the password that you have entered for the extension.

Click [here](#) to download Eyebeam

Configuring a SIP account in Eyebeam

1. Now start up Eyebeam. The first time you start it up, it will bring up the 'Settings-server' dialog.

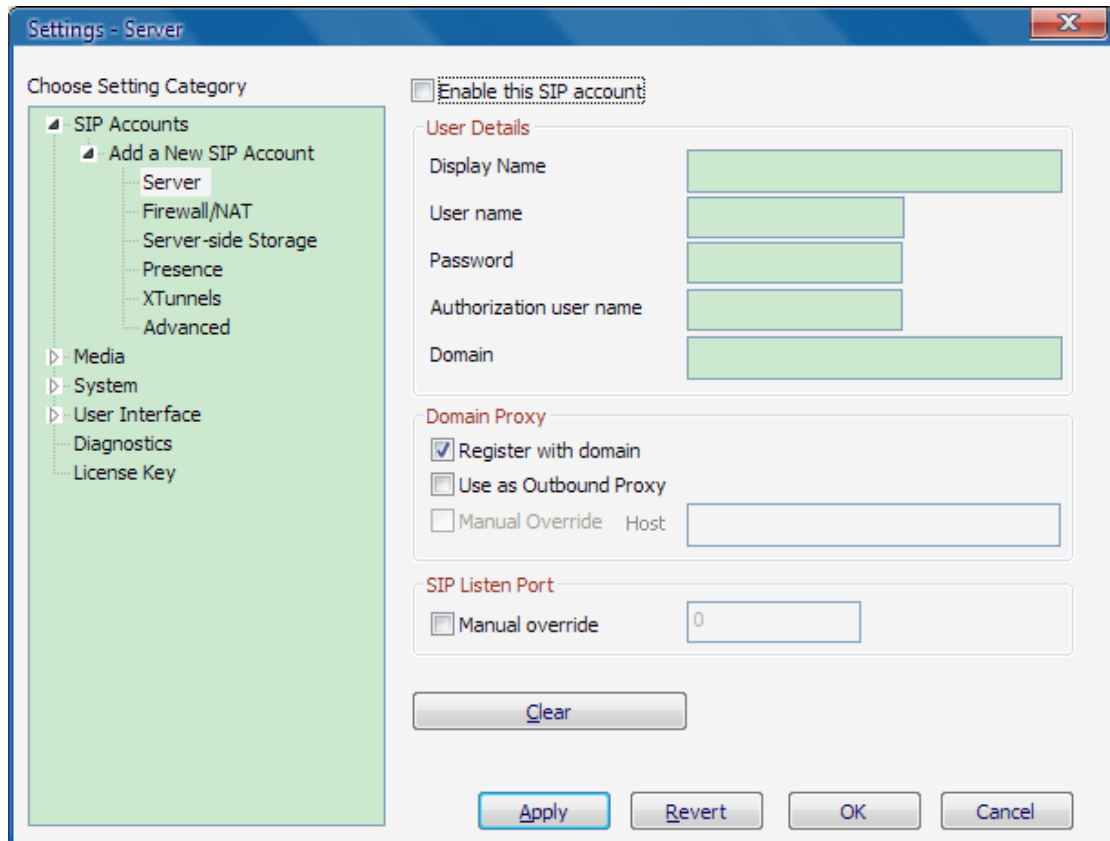


Figure 1-1

2. SIP account properties

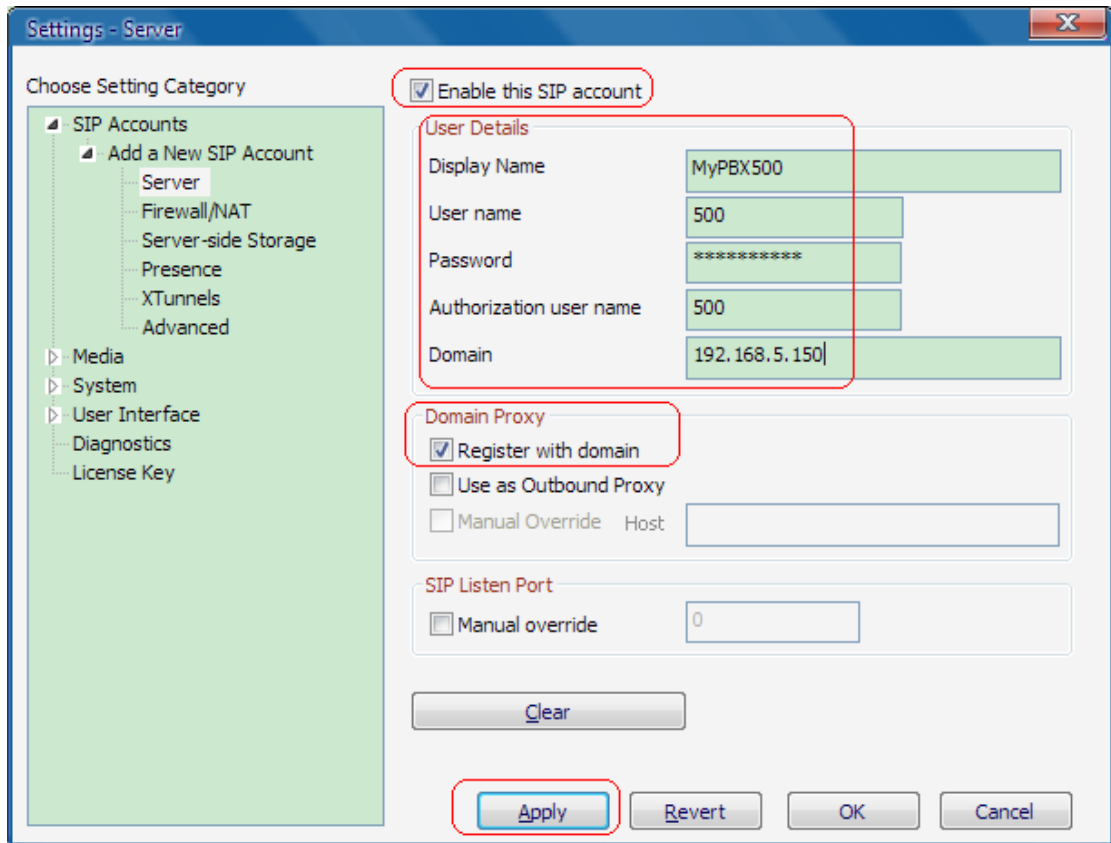


Figure 1-2

- 1) Enable this sip account
 - 2) Now enter a Display name.
 - 3) In the User name field, enter the extension number.
 - 4) In the Password field enter the SIP password.
 - 5) In the Authorized User name field, enter the extension number again.
 - 6) In the 'Domain' field enter the Network address IP of MyPBX server.
 - 7) In the Domain proxy section, ensure that you have selected 'Register with domain' then click apply
3. Eyebeam now tries to register with MyPBX. If successful, you will see a screen similar to the one in the screenshot.



Figure 1-3

<Finish>