

Escene IP Phone Configuration Guide

Yeastar Technology Co., Ltd.

Configuring with MyPBX manually	3
Phone provisioning with MyPBX	6

Configuring with MyPBX manually

Configuring Escene IP phone with MyPBX

Applicable Models: Escene ES620, ES410, ES330, ES320, ES290, ES220, ES205, DS622, DS412, DS102, WS620, WS320, WS220, WS103, WS102, HS118, HS108, US103, US102, GS620, GS410, GS330.

Please note:

This guide has been tested for Escene ES330 with firmware version V1.0.5.2-2092 and Escene ES620 with firmware version V2.2.7-3449. Be aware that different firmware revisions may have different web interface formats and functionality.

Register with MyPBX

NOTE: In this guide, the IP of the IP phone is 192.168.5.6; the IP of MyPBX is 192.168.5.151.

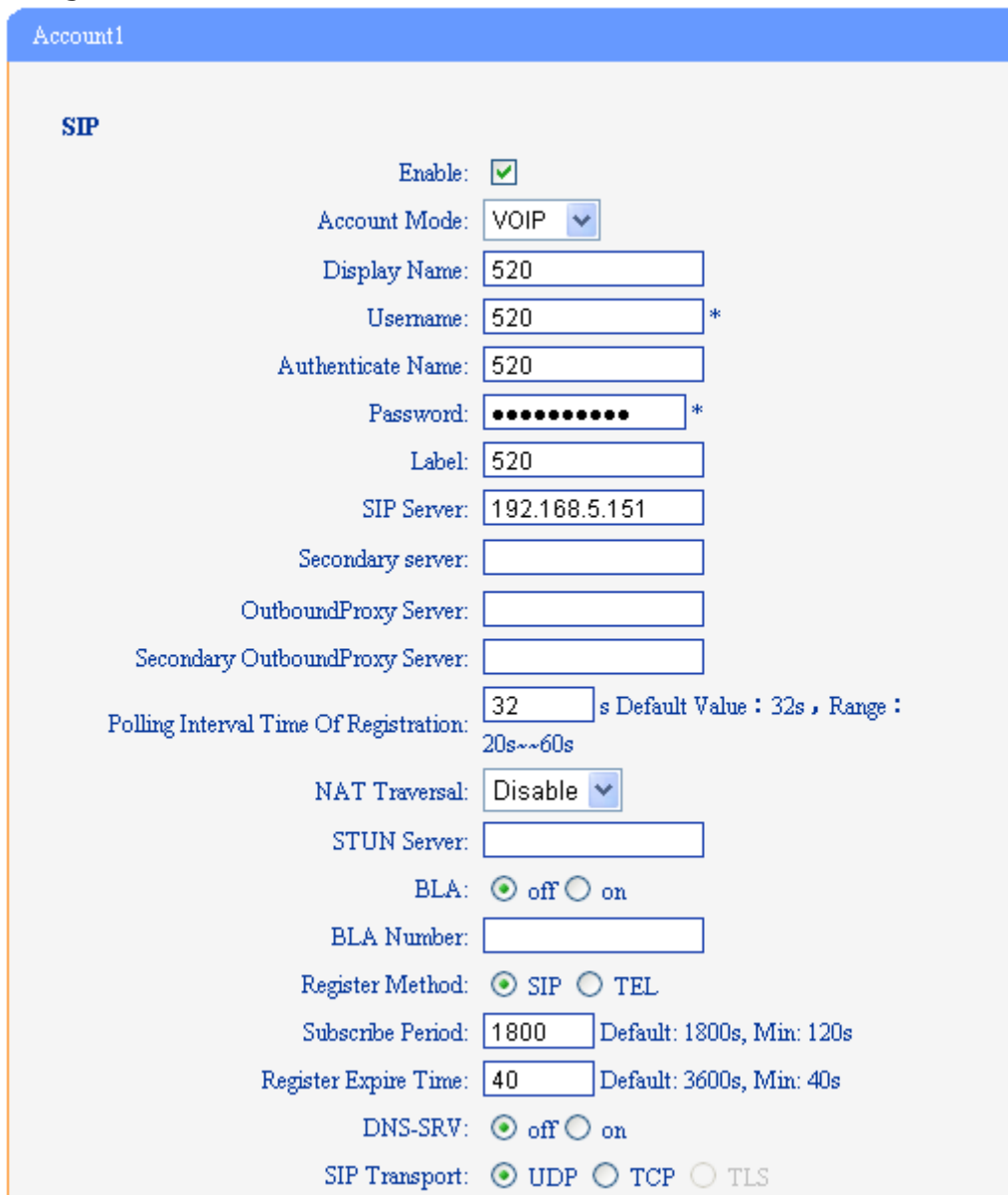
1. Start the browser on PC. In the address bar, enter the IP address of the phone: `http://192.168.5.6`.
2. Enter the phone's login username (default "root") and password (default "root").



Figure 1

3. Click on the "Sip Account" tab, chose the account you want to register.

4. Chose Account1 to edit, click on "Account1".The setting page of SIP is shown in Figure2.



Account1

SIP

Enable:

Account Mode: VOIP

Display Name: 520

Username: 520 *

Authenticate Name: 520

Password: *

Label: 520

SIP Server: 192.168.5.151

Secondary server:

OutboundProxy Server:

Secondary OutboundProxy Server:

Polling Interval Time Of Registration: 32 s Default Value : 32s , Range : 20s~~60s

NAT Traversal: Disable

STUN Server:

BLA: off on

BLA Number:

Register Method: SIP TEL

Subscribe Period: 1800 Default: 1800s, Min: 120s

Register Expire Time: 40 Default: 3600s, Min: 40s

DNS-SRV: off on

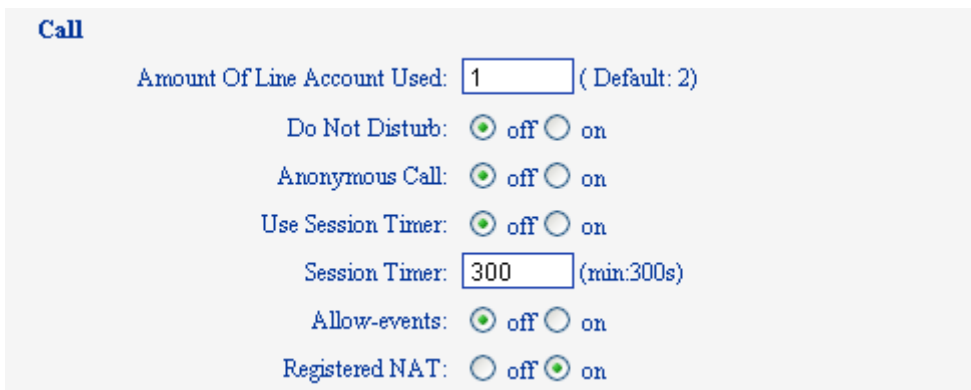
SIP Transport: UDP TCP TLS

Figure 2

- 1) Enable: check the box to activate the account.
- 2) Account Mode: VOIP
- 3) Display Name: set a display name of the extension according as you prefer
- 4) User Name: same as the extension's number in general, such as 520
- 5) Authenticate Name: same as the extension's number in general, such as 520
- 6) Password: set the "Password" field to the extension's Authentication password
- 7) Label: et the "Label" field to the name you want to appear on the


Phone display

- 8) Sip Sever: set the "Sip Sever" field to the IP Address of the MyPBX server – in this example, 192.168.5.151
 - 9) NAT Traversal: the default setting is Disable, if you want to configure the phone as a remote extension ,you should chose STUN, then enter a correct address in the field of " STUN Sever"
 - 10) BLA: off
 - 11) Register Method: chose the method corresponding to the Account Mode
 - 12) DNS-SRV: off
 - 13) Sip Transport: UDP
5. Call Section


Figure 3

- 1) Do Not Disturb: off
- 2) Anonymous Call: off
- 3) Use Session Timer: off
- 4) Allow-event: off
- 5) Registered NAT: on

6. Security Section:


Figure 4

- 1) SIP Encryption: off
 - 2) RTP Encryption: this is an SRTP option, you must chose "off",if you want to chose "on", please enable SRTP in MyPBX first
7. Click the button "Submit" and the phone will register with your MyPBX. This can be verified via "Status" page of MyPBX management console.

Phone provisioning with MyPBX

The supported model of Escene IP phone is ES220,ES320,ES330,ES410,ES620. The firmware we tested in this example is V2.6.4, if your firmware is different from this one, the web interface may got a little difference.

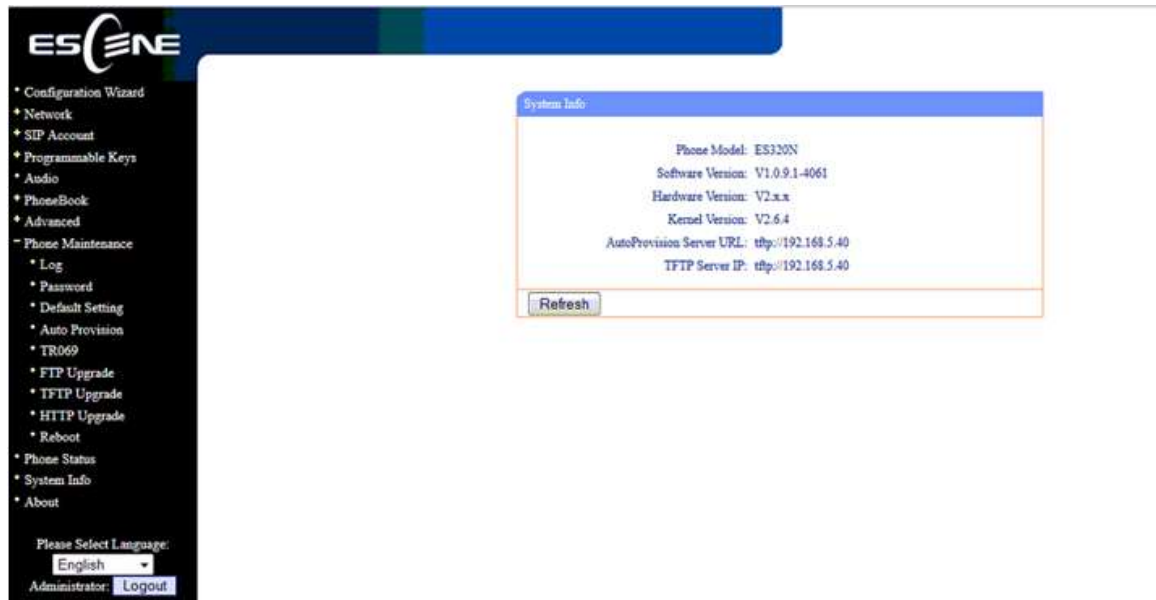


Figure 5

Step1. Disable DHCP Server on your local network.

E.g. Disable DHCP Server on Linksys Router.

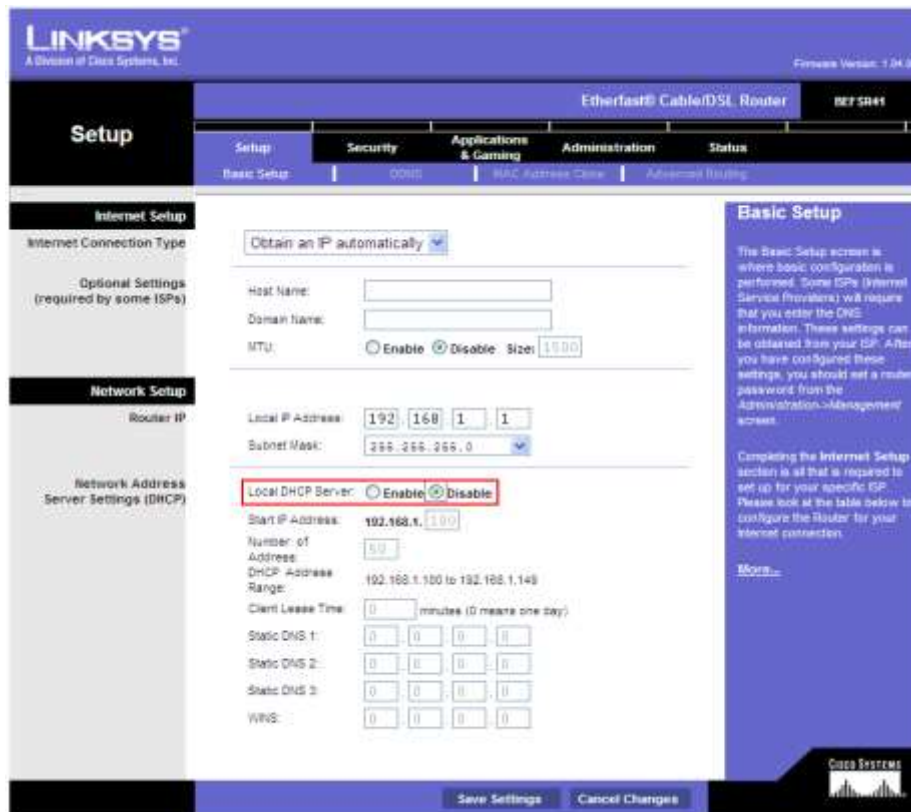


Figure 6

Step2. Enable DHCP Server on MyPBX.

You can find it in 'system→Network Preferences→DHCP server'.



Figure 7

Step3. Create a phone in 'phone provisioning' page, you can check the list of supported phones in this page directly.

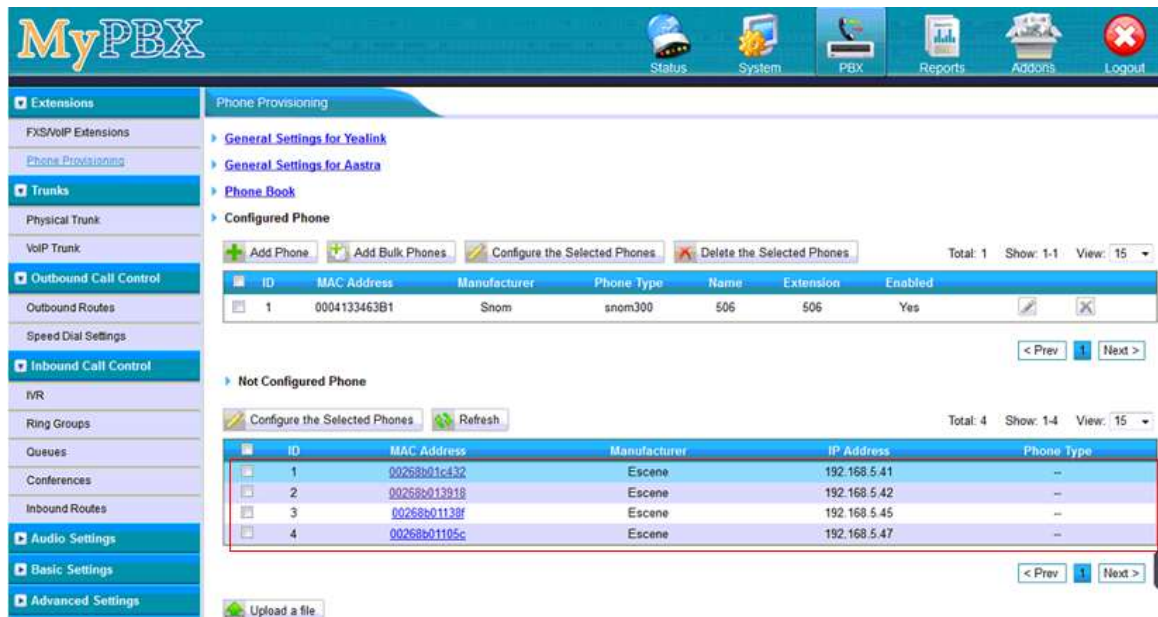


Figure 8

Click one Escene IP phone, input the name, choose the phone type and the account, then activate it.

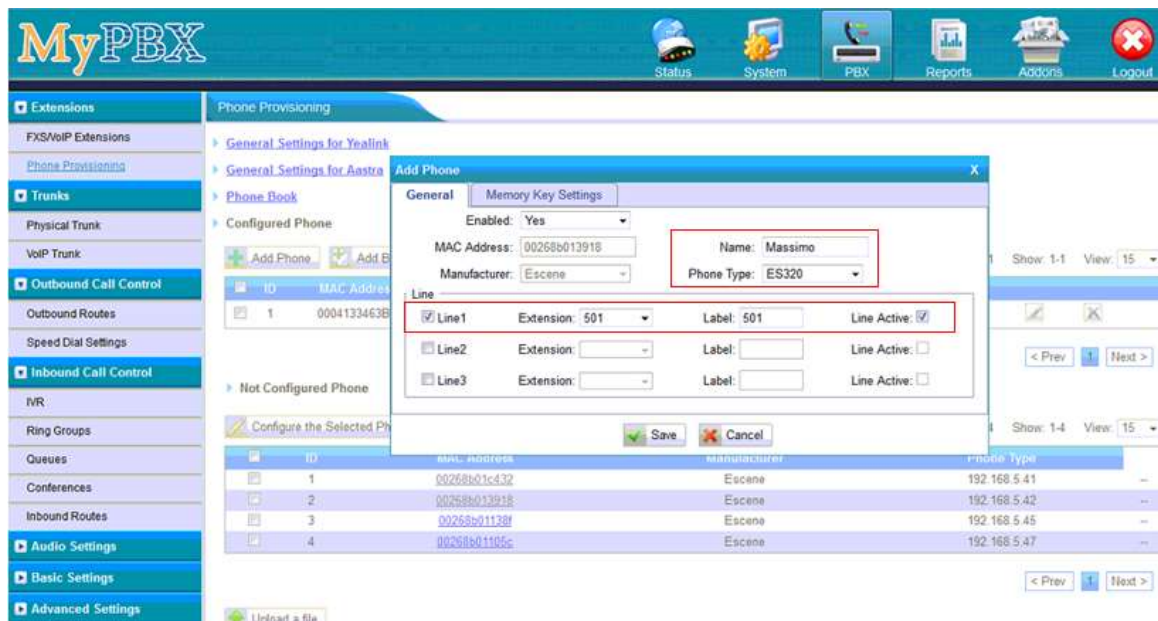


Figure 9

When you click 'save' button, there will be a window popup, you can click OK to reboot the IP phone directly to take effect, if you click 'No', you can reboot the IP phone manually to take effect.

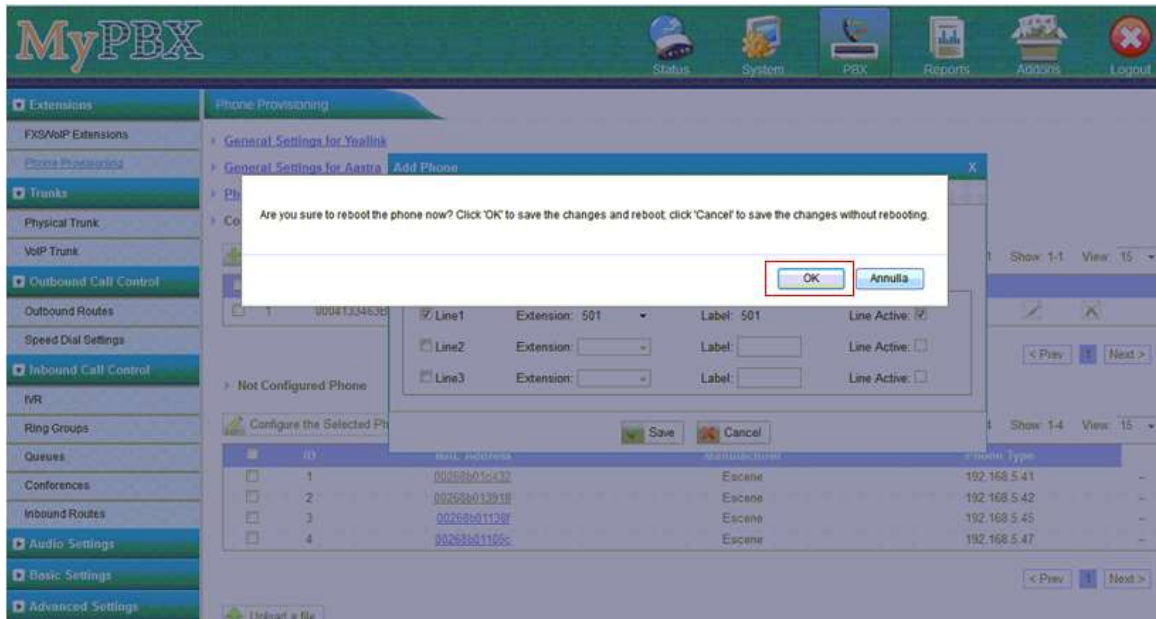


Figure 10

Click 'Apply the changes' to take effect in MyPBX. You can see the recorded here directly.

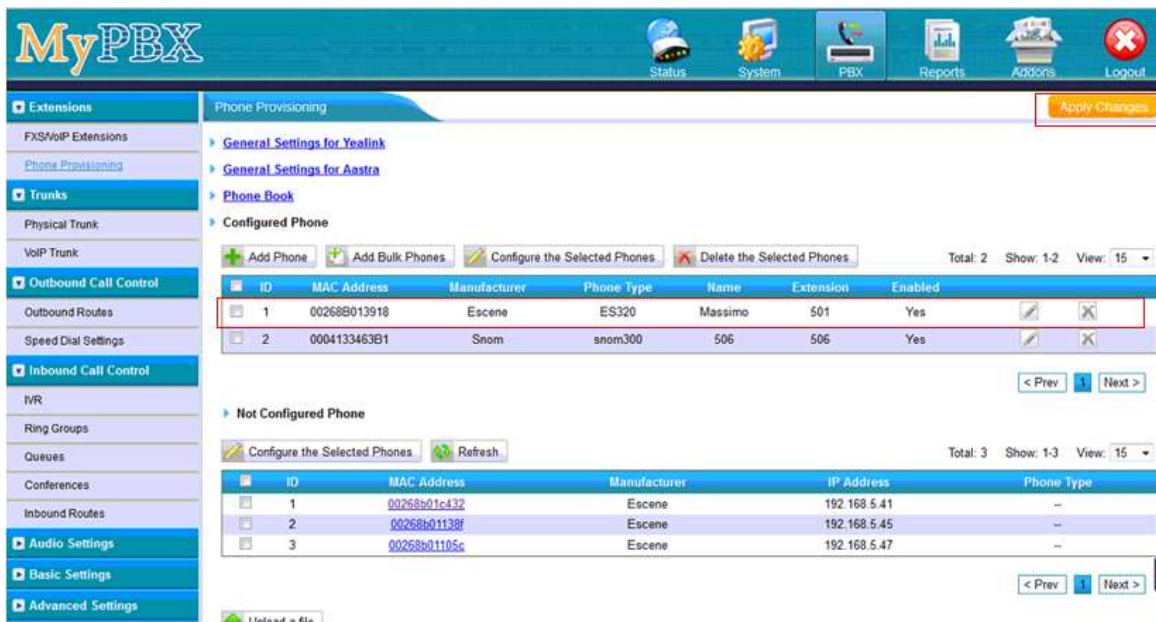


Figure 11

You can also configure the IP phone to download the configuration from MyPBX directly if you are sure the configuration files has been uploaded or created in MyPBX side. In this example, the IP address of MyPBX is 192.168.5.40

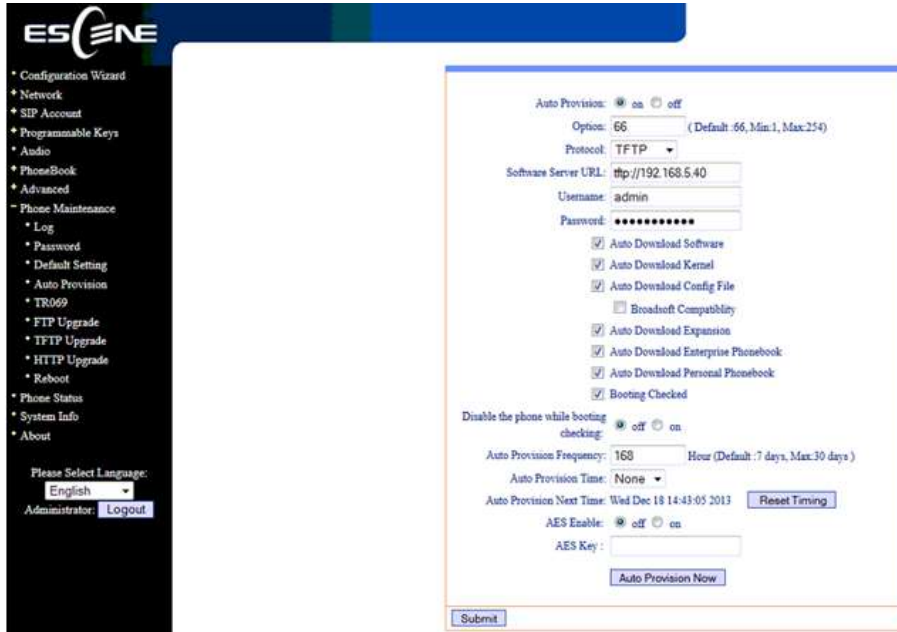


Figure 12

<Finish>